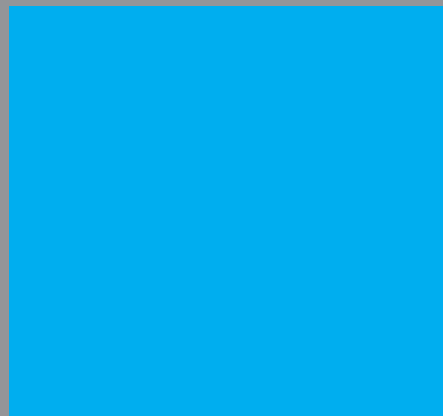
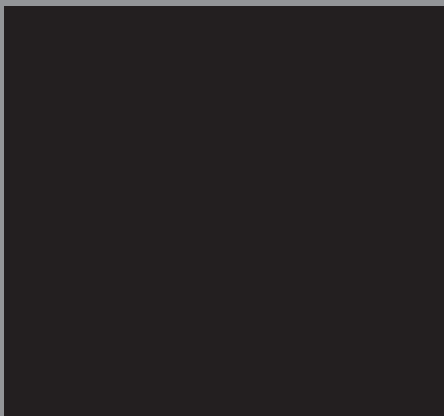


This is an A4 file  
with 3mm bleed  
all round



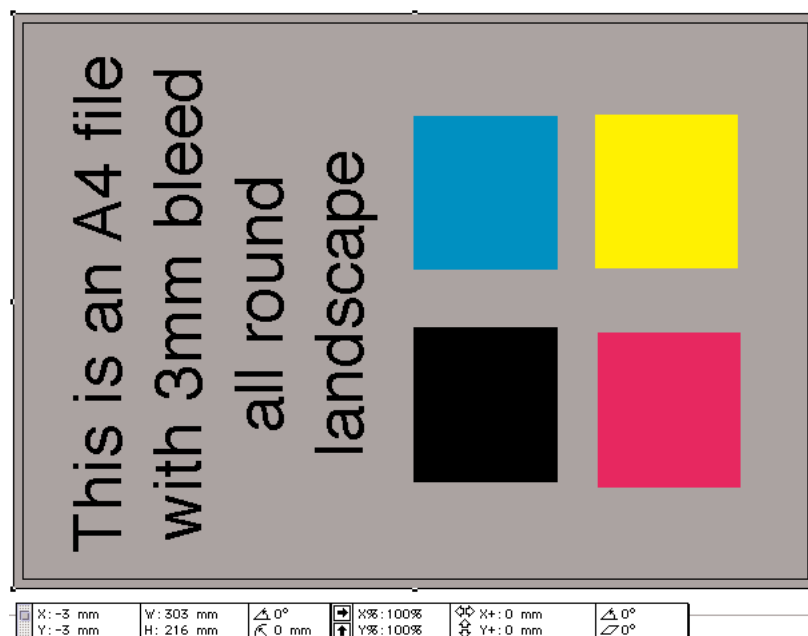
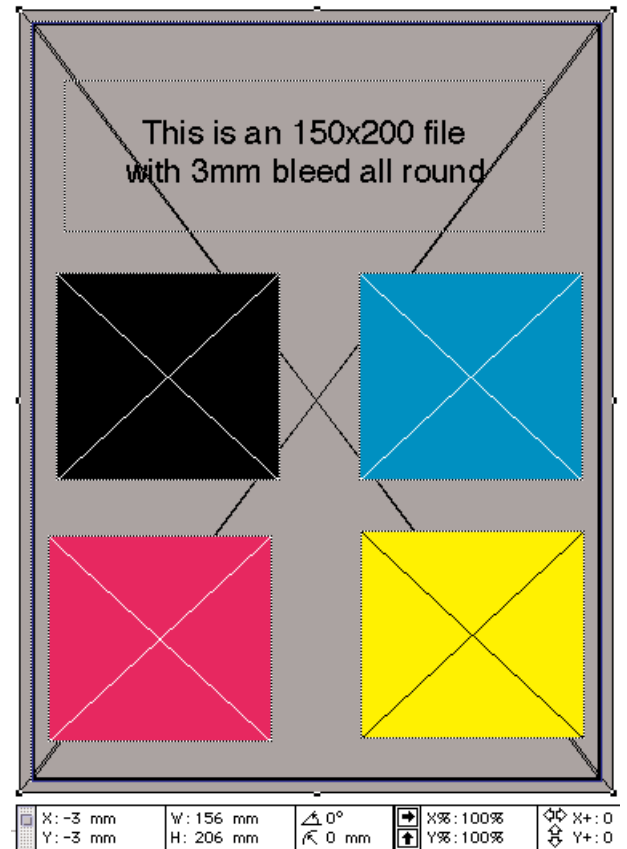
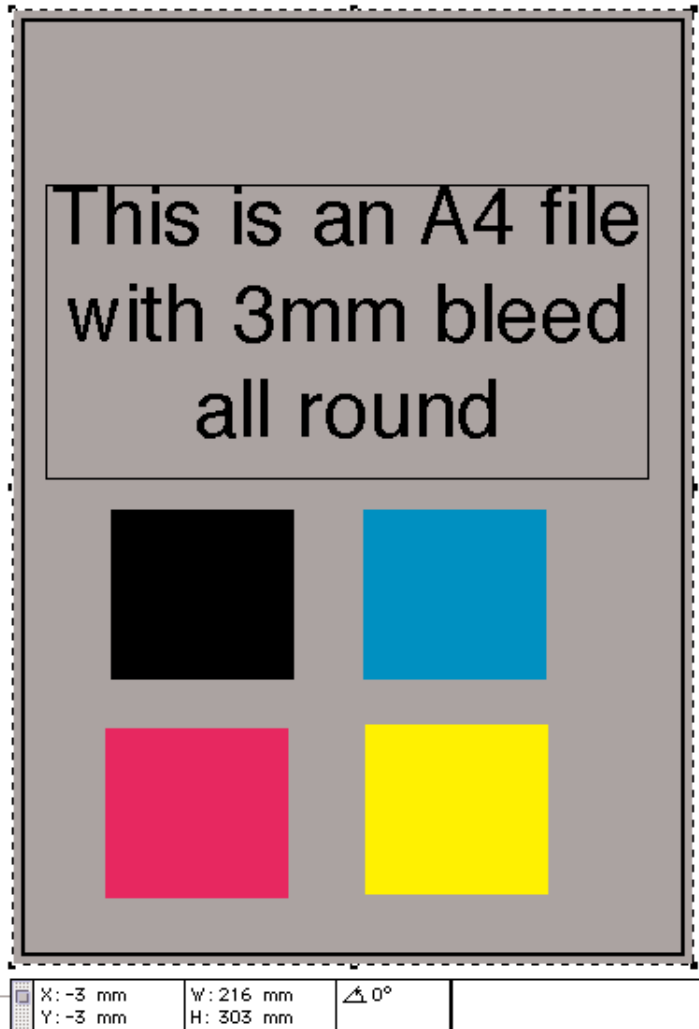
# Document Layout

This is a standard A4 page with 3mm bleed all round.  
3mm bleed is sufficient.

Use this page as a guide for any size document:

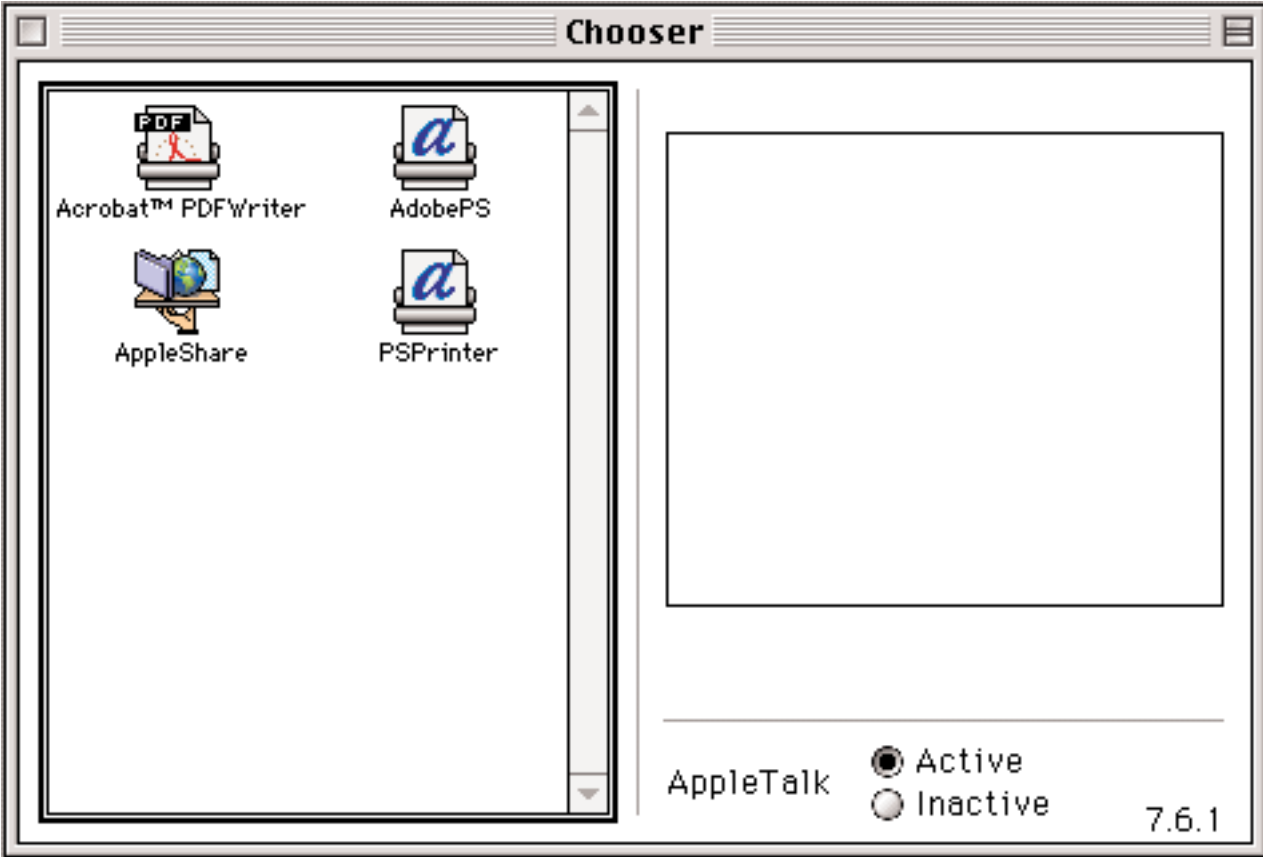
eg. 297x210 Landscape, will still require 3mm bleed all round. (303x216)

eg. 150x200 + 3mm bleed will be 156x206

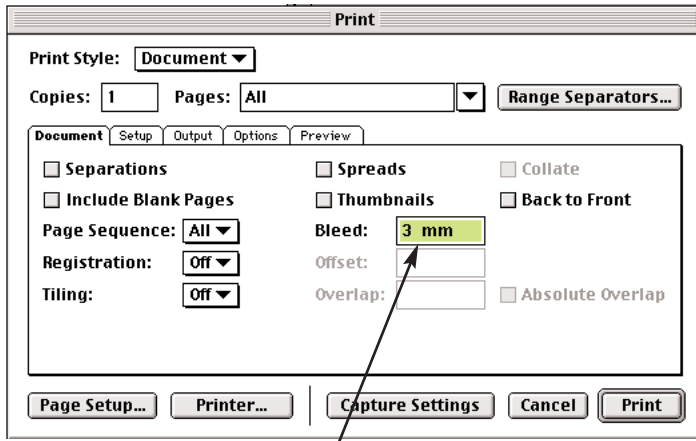


# Chooser Setup

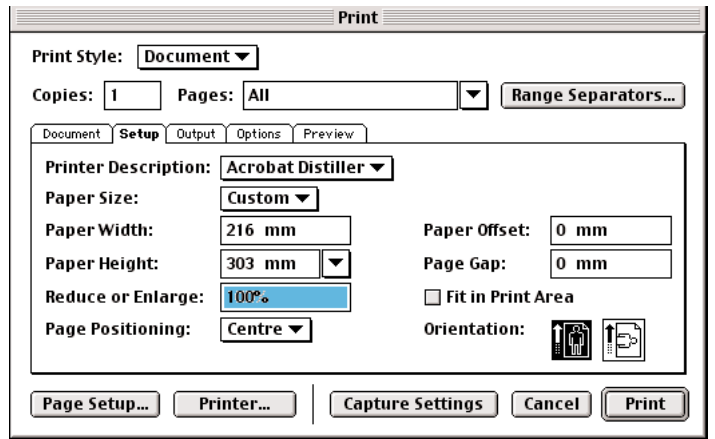
Go to the chooser and select you printer Driver. (AdobePS\_8.6 is recommended.



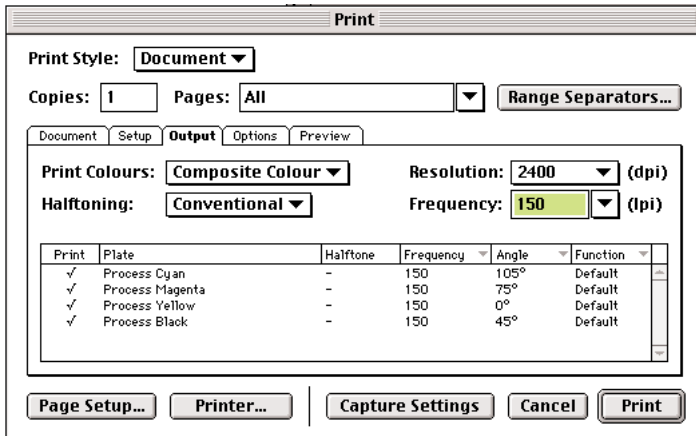
# Print Setup Options



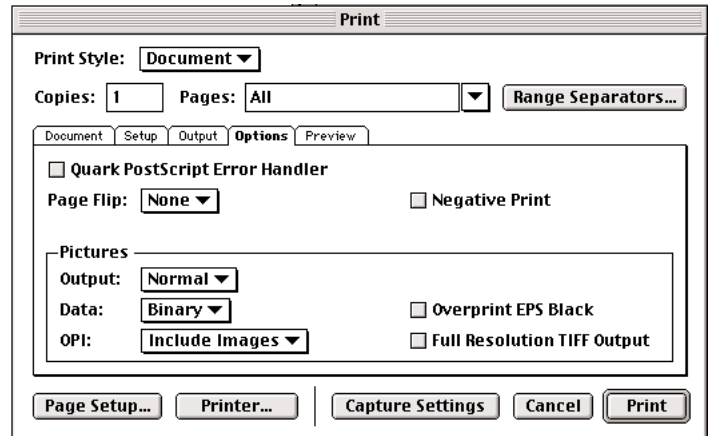
This file will be setup to run as composite so there is no need to check Separations, only the bleed setting 3mm. Also, do not check the Registration option as Trim marks will be placed on the Imposition software



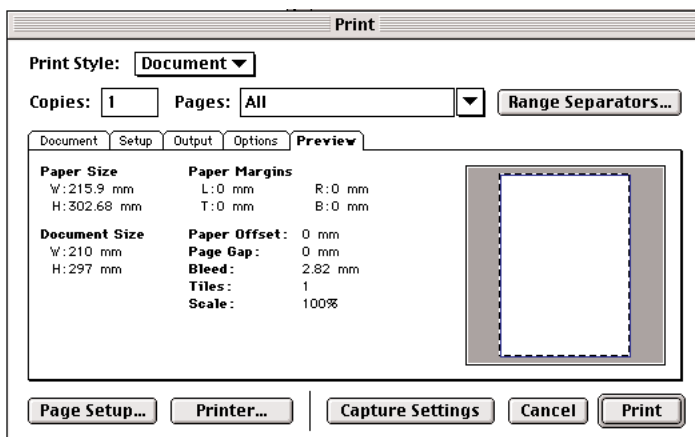
This were the Acrobat Distiller PPD is selected as it will be imposed on the Signastation 5.0. The paper W&H settings will depend upon the actual document. eg 150x200 PW 156 PH 206



The Trendsetter 3244 res is 2400, LPI#150 is standard output, these are default settings as they will be overridden on the Delta RIP. Composite Colour must be selected.

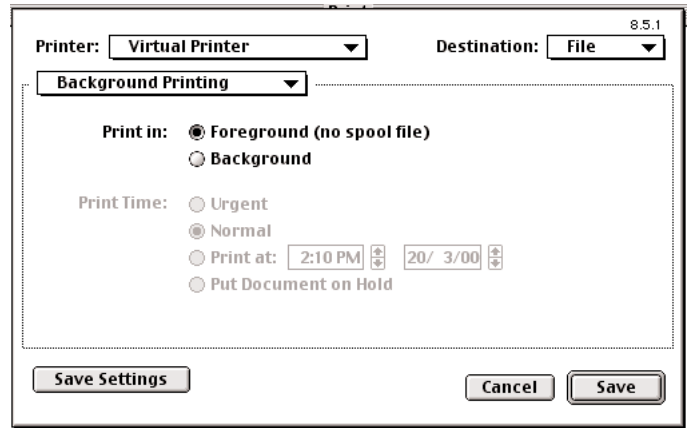
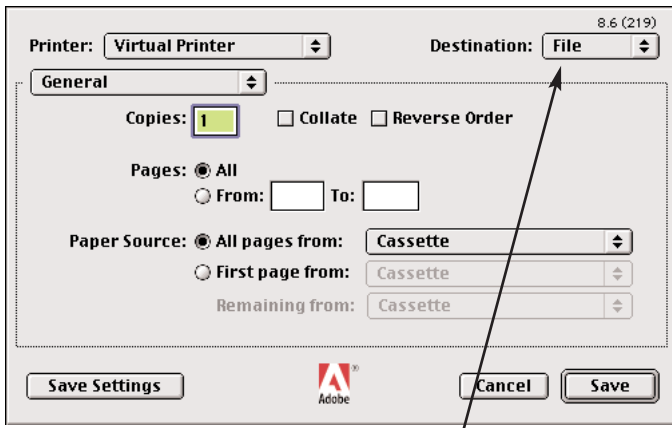


As Above

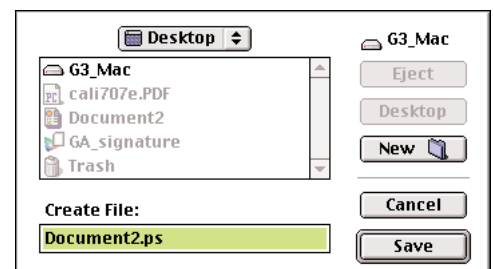
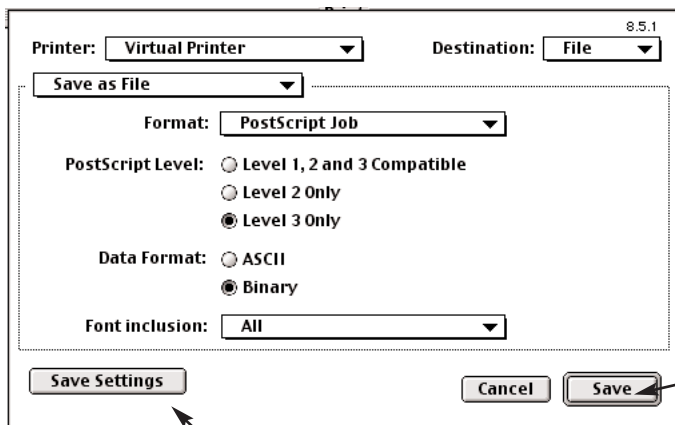
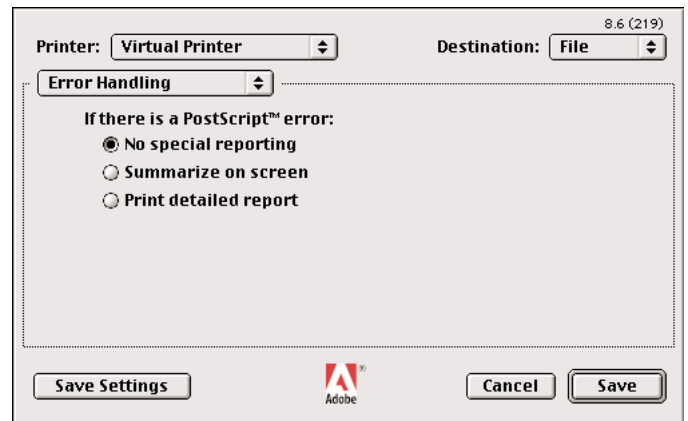
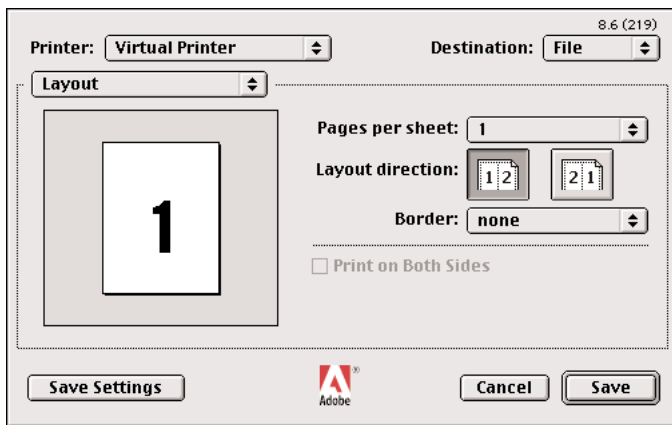
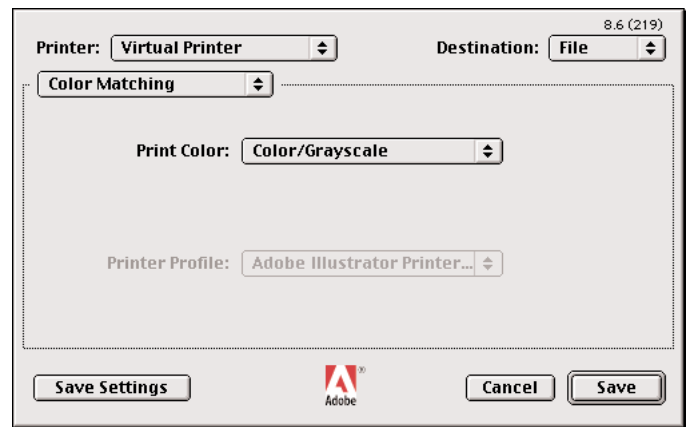
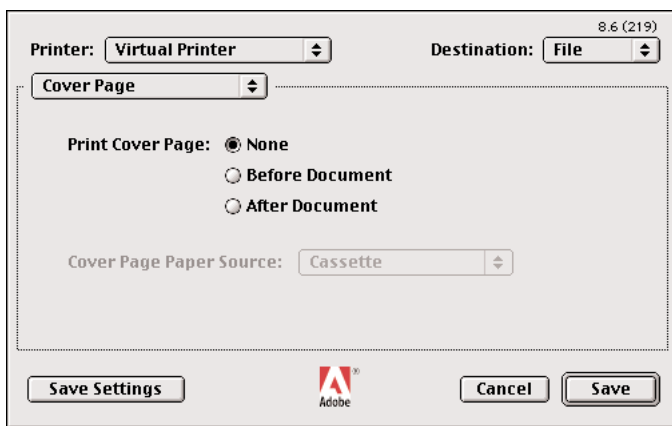


Preview should resemble the following. If it were a landscape page it would still appear as such but the landscape Orientation in the Setup tab would have been selected and PW & PH would have been reversed.

# Printer Options\_for PS file output



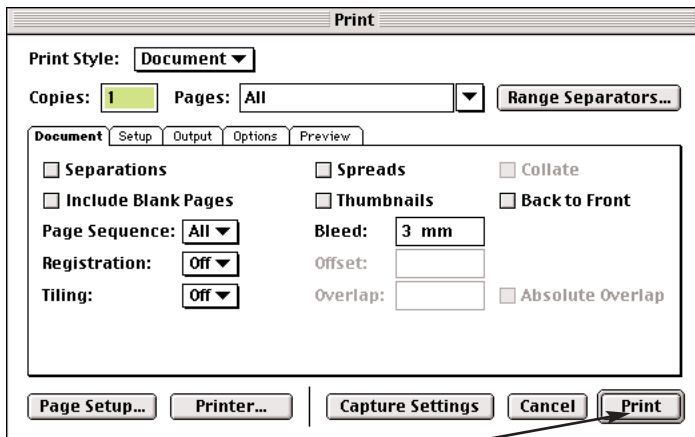
Just use the settings as follows, the printer used is the Virtual Printer which automatically changes the Destination from Print to File.



You can save your PS file wherever you like, but ensure that .ps ext is included in the file. Also avoid using ( ) / etc as they can conflict on NT4.0

This is the most important settings you will have to set. Also by selecting the Save Settings button will ensure that you dont have to redo your settings all the time.

# Final Print Output options



When the Print button is selected the file will be printed to a PostScript file to the area where you have nominated. These files can then be saved on to an archive medium and sent to BPA.